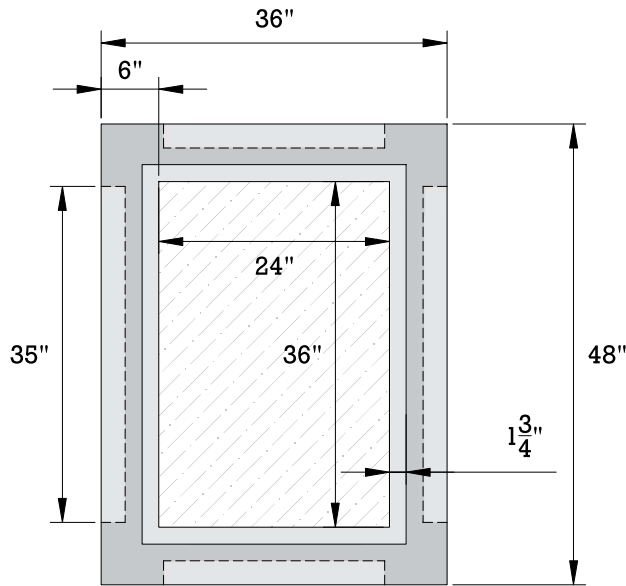
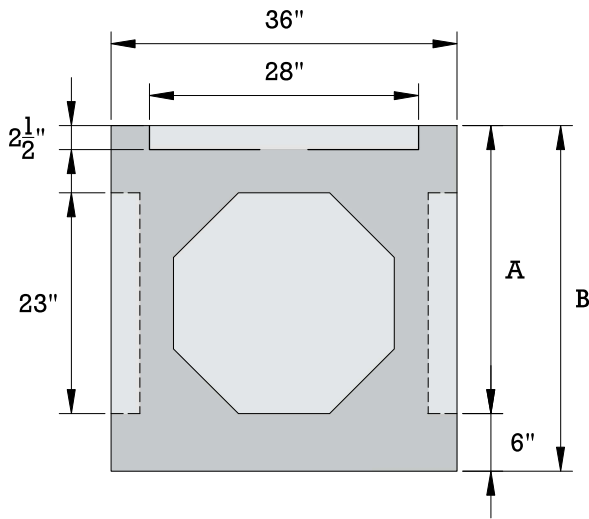


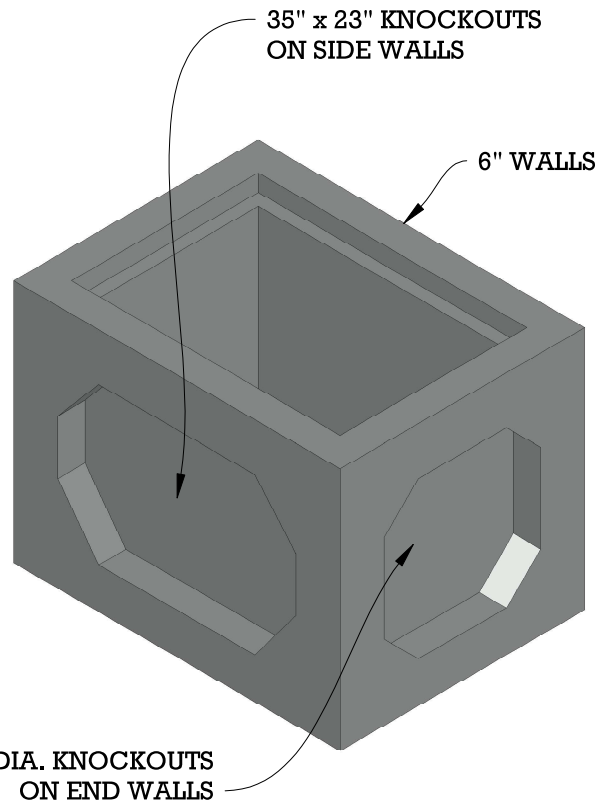
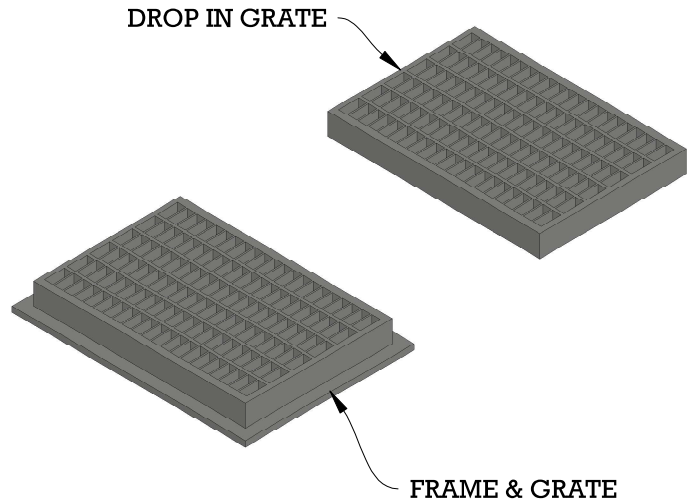
# CATCH BASIN 2X3



**TOP VIEW**



**SIDE VIEW**



23" DIA. KNOCKOUTS ON END WALLS

**ISOMETRIC VIEW**

SIZE	A	B	WEIGHT (LBS)	SPECIFICATIONS
2'x3'x3'	36"	42"	2,590	Concrete: 4000PSI @ 28 days
2'x3'x4'	48"	54"	3,875	Reinforcement: ASTM A615 GRADE 60 ASTM A185 GRADE 65
				Structure is designed to meet HS 20-44 loading requirements
				Frame and Grates Available; Heavy Duty & Bicycle Safe
				Concrete Risers Available

