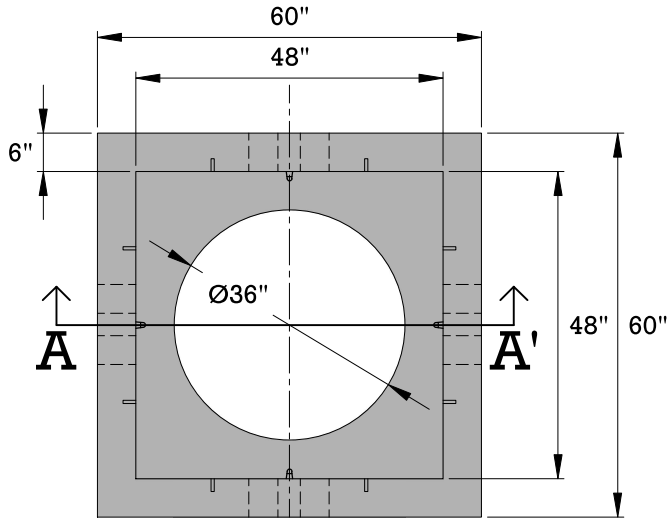
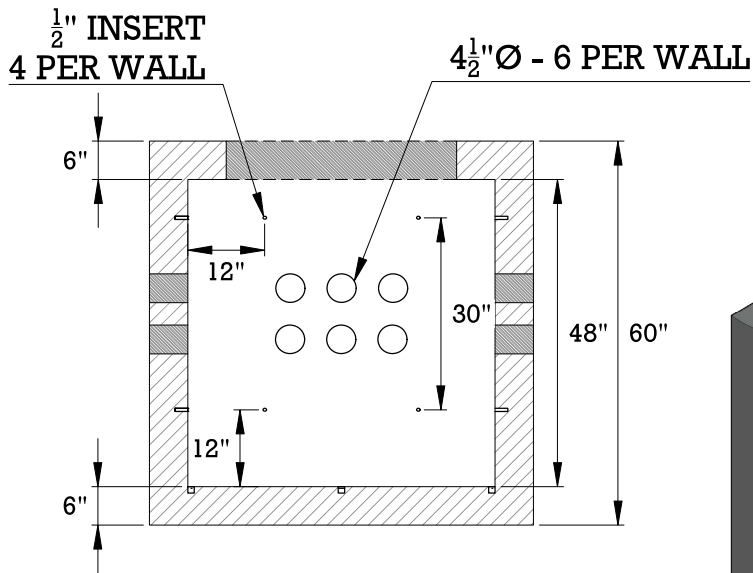
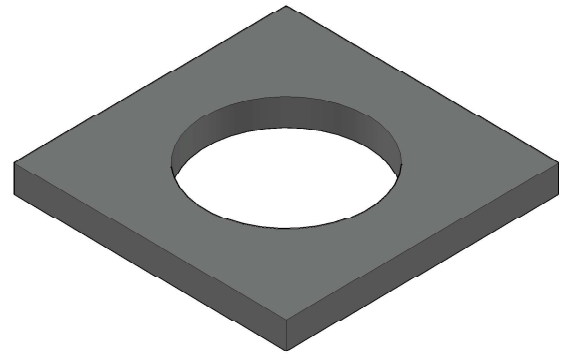


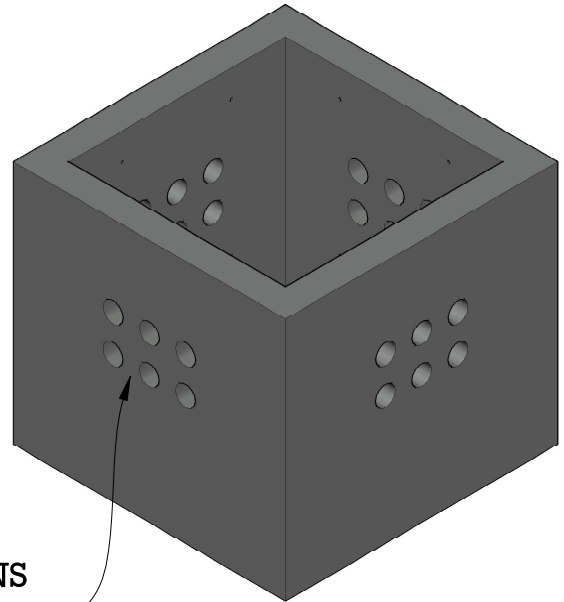
# 6-PACK PULL BOX



PLAN VIEW



SECTION A-A'



HOLE LOCATIONS  
ARE CUSTOMIZABLE

ISOMETRIC VIEW

| SIZE | WEIGHT (LBS) | SPECIFICATIONS  |
|------|--------------|---|
|      | 6,850        | Concrete: 4000PSI @ 28 days   |
|      |              | Reinforcement:<br>ASTM A615/A615M GRADE 60<br>ASTM A1064/A1064M-16B   |
|      |              | <ul style="list-style-type: none"> <li>The tank is a monolithic pour (no mid seams).</li> <li>Top Slab is sealed with prostick mastic.</li> <li>The tank is designed to meet HS 20-44 loading requirements.</li> <li>Reinforced lid - has optional PA inspection port.</li> <li>Reinforced risers are available.</li> <li>3 optional inlets and 1 outlet location.</li> </ul> |

