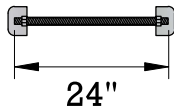
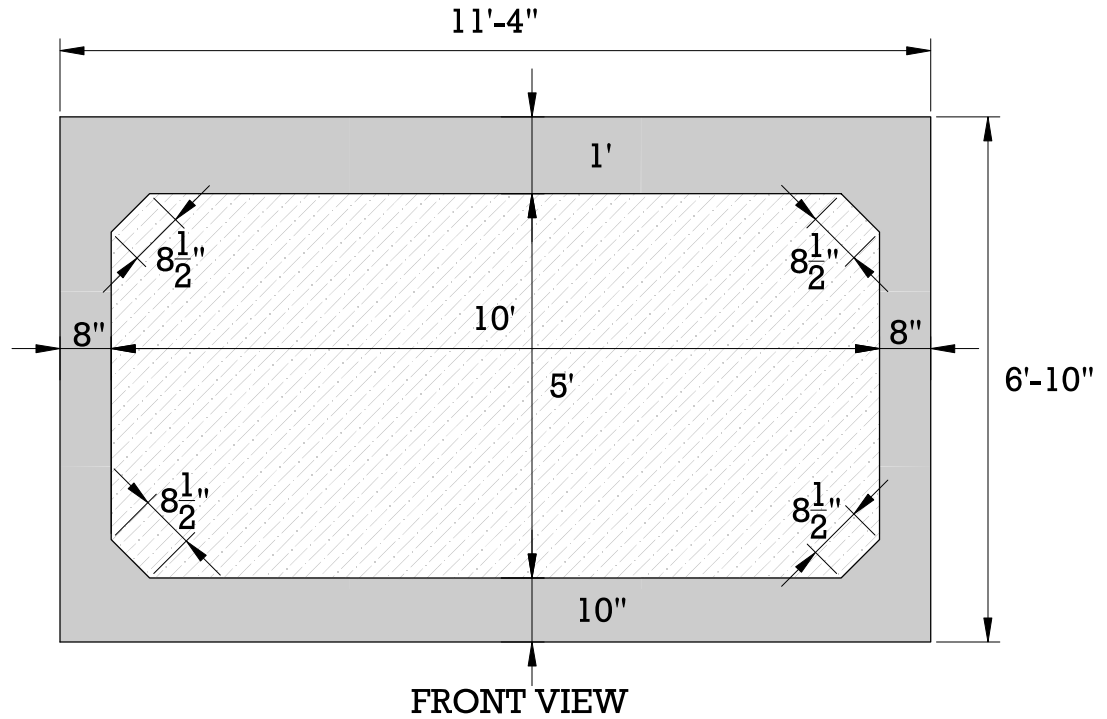
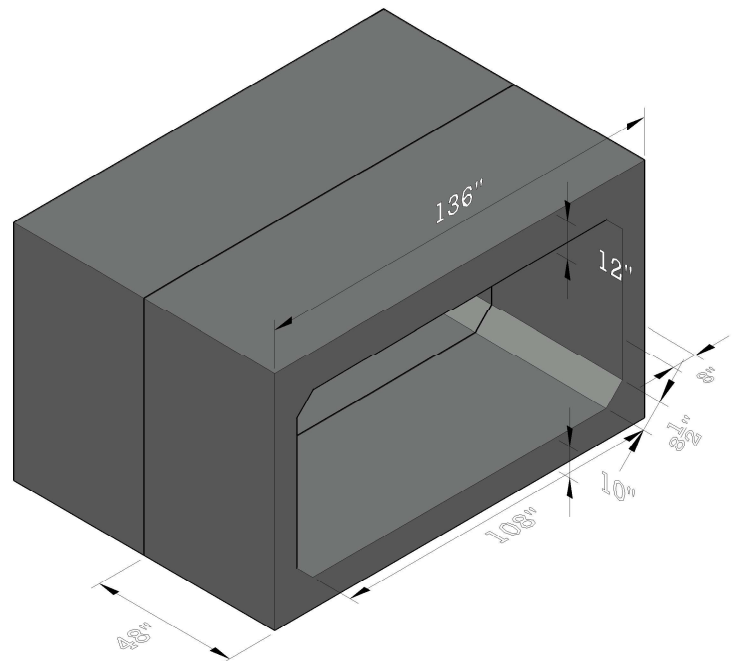


BOX CULVERT



**ENLARGED VIEW
POCKET BOLT**



		WEIGHT (LBS)	SPECIFICATIONS
Per Section		15,250	Concrete: 5000PSI @ 28 days
			Reinforcement: Bar ASTM A615 GR60 WWR ASTM A185/A497 GR65
			Structure is designed to meet HS 20-44 loading requirements
			Frame and Grates Available; Heavy Duty & Bicycle Safe

