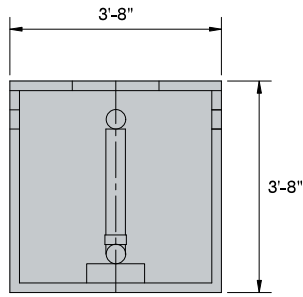
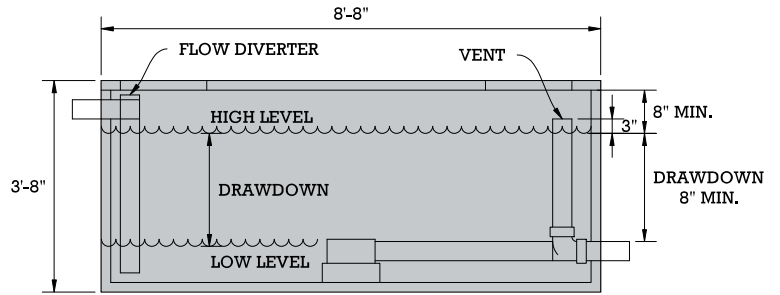


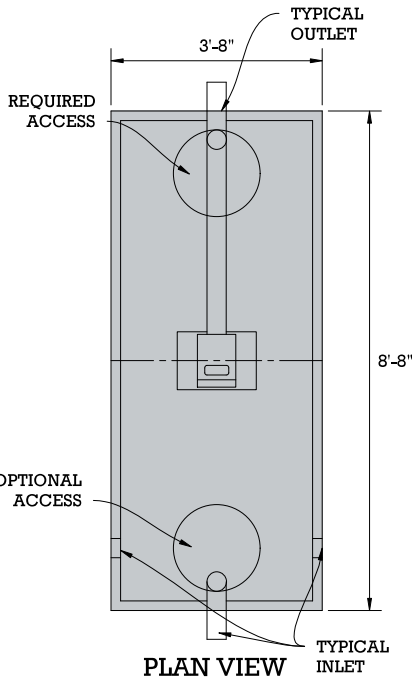
# FLOUT TANK



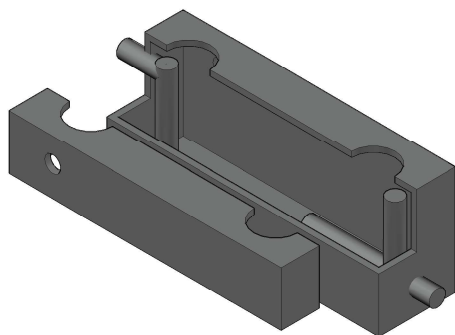
**END VIEW**



**SIDE VIEW**



**PLAN VIEW**



**ISOMETRIC VIEW**

TANK	W	L	D
"A"	42"	84"	36"
"B"	48"	96"	36"
"C"	66"	90"	42"

\* CAN BE USED FOR AN ALTERNATING FLOUT SYSTEM.

15" DD MINIMUM REQUIREMENT  
DD = DRAWDOWN

FLOUT TANK "A"					
CI	USE INLET NUMBER	DD	DOSE	V	
*	27"	3	15"	165	23"
*	27"	3	12"	126	20"
*	22"	2	10"	105	18"
*	22"	2	8"	84	16"
*	18"	1	6"	63	14"
<b>WEIGHT:</b>		<b>TANK VOLUME:</b>			
TOP:		1,144 lbs.	132.3	CAL./L.F.	
BOTTOM:		4,057 lbs.	11.8	GAL./IN.	
TOTAL:		5,201 lbs.			

FLOUT TANK "B"					
CI	USE INLET NUMBER	DD	DOSE	V	
*	27"	3	15"	225	23"
*	27"	3	12"	180	20"
*	22"	2	10"	150	18"
*	22"	2	8"	120	16"
*	18"	1	6"	90	14"
<b>WEIGHT:</b>		<b>TANK VOLUME:</b>			
TOP:		1,494 lbs.	216	GAL./L.F.	
BOTTOM:		4,699 lbs.	15.2	GAL./IN.	
TOTAL:		6,193 lbs.			

FLOUT TANK "C"					
CI	USE INLET NUMBER	DD	DOSE	V	
*	33"	4	21"	431	29"
*	30"	4	18"	369	26"
*	28"	3	16"	328	24"
*	26"	3	14"	287	22"
*	24"	2	12"	246	20"
*	22"	2	10"	205	18"
*	20"	1	8"	164	16"
*	18"	1	6"	123	14"
<b>WEIGHT:</b>		<b>TANK VOLUME:</b>			
TOP:		1,926 lbs.	241	GAL./L.F.	
BOTTOM:		6,228 lbs.	20.5	GAL./IN.	
TOTAL:		8,154 lbs.			

SIZE	WEIGHT (LBS)	SPECIFICATIONS
"A"	5,201	Concrete: 4000PSI @ 28 days
"B"	6,193	Reinforcement: ASTM A615/A615M GRADE 60 ASTM A1064/A1064M-16B
"C"	8,154	<ul style="list-style-type: none"> <li>The tank is a monolithic pour (no mid seams).</li> <li>Top Slab is sealed with prostick mastic.</li> <li>The tank is designed to meet HS 20-44 loading requirements.</li> <li>Reinforced lid - has optional PA inspection port.</li> <li>Reinforced risers are available.</li> <li>3 optional inlets and 1 outlet location.</li> </ul>

**JMI**  
Jamestown Macadam, Inc.  
www.jamestownmacadam.com  
716-665-4504