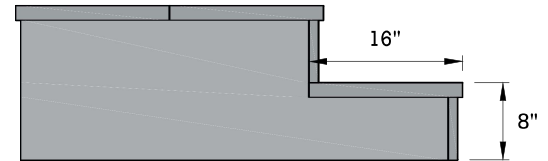
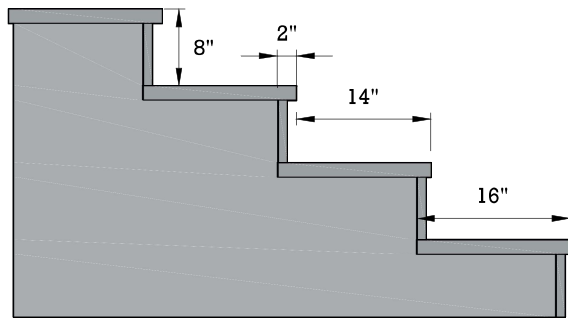
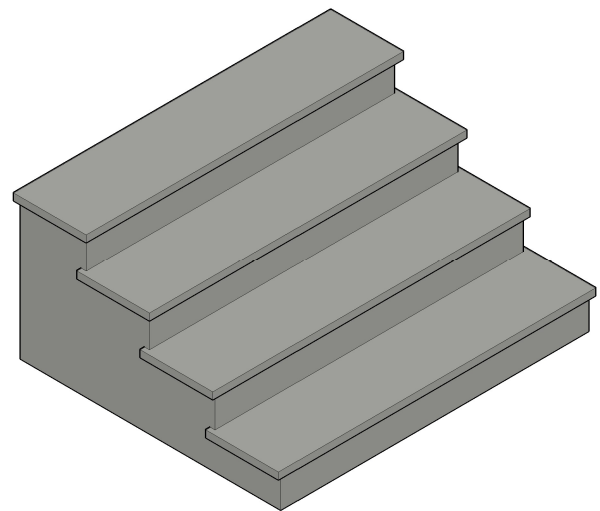


MODULAR STEP



SIDE VIEW

CODE	DESCRIPTION	WEIGHT (LBS.)
STEP	1 STEP SIDE	27
STEP	2 STEP SIDE	81
STEP	2' WIDE DECK	35
STEP	2' WIDE TREAD	77
STEP	3 STEP SIDE	160
STEP	3' WIDE DECK	53
STEP	3' WIDE TREAD	116
STEP	4 STEP SIDE	268
STEP	4' WIDE DECK	70
STEP	4' WIDE TREAD	154
STEP	5 STEP SIDE	402
STEP	5' WIDE DECK	88
STEP	5' WIDE TREAD	193
STEP	6 STEP SIDE	562
STEP	6' WIDE DECK	106
STEP	6' WIDE TREAD	231



ISOMETRIC VIEW

TREAD WIDTH	DECK WIDTH	NOTES:
3'	2'	Maximum number of steps is 6 high.
4'	3'	Maximum number of decking is 5 deck with 1 step.
5'	4'	Maximum combination of steps with decking is 6 i.e. 2 steps + 4 deck
6'	5'	When ordering a Modular Step system please keep in mind the following:
EXTRA SIDE PIECE	6'	-Steps are at an 8" Rise & they are 16" total depth with only 14" exposed to step (2" overlap)

